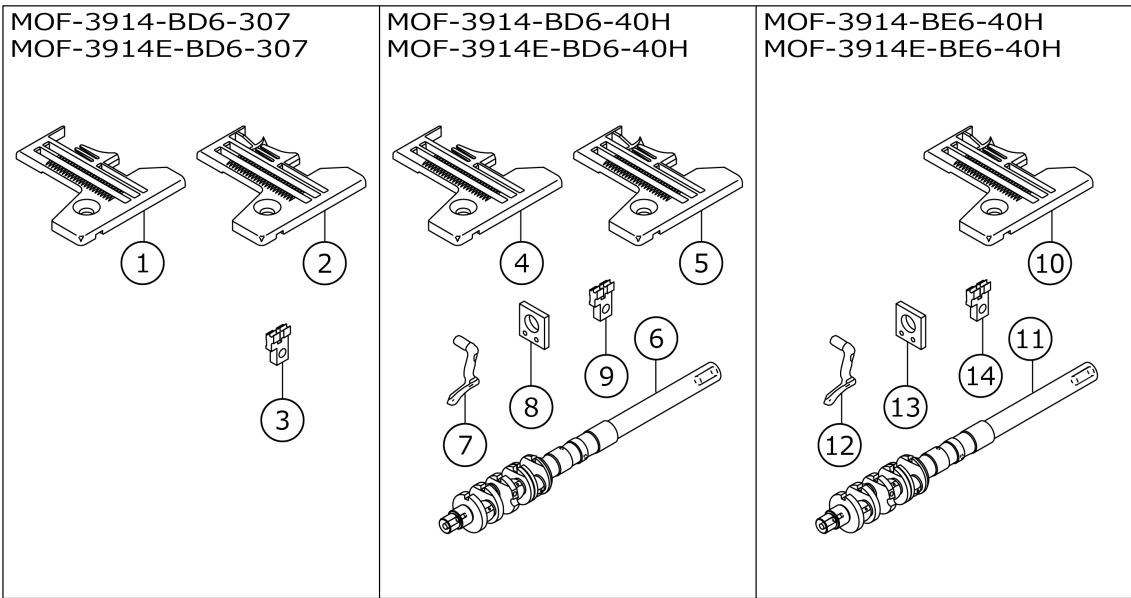


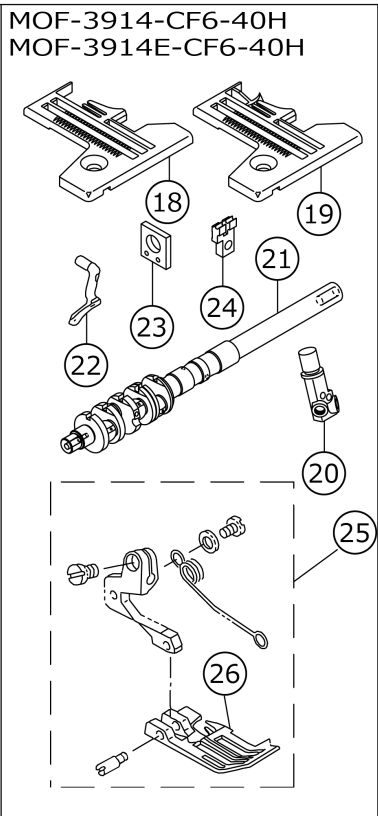
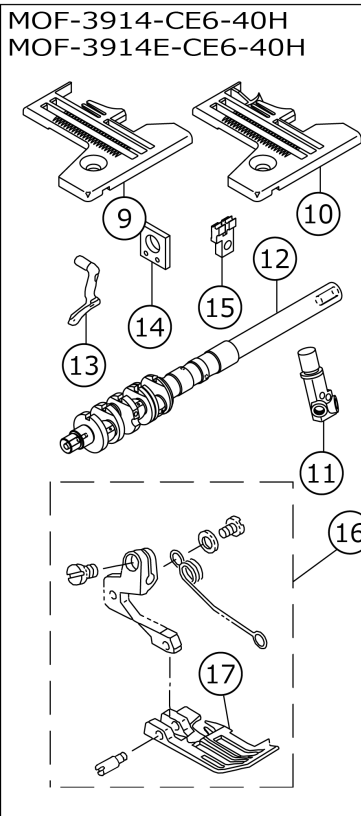
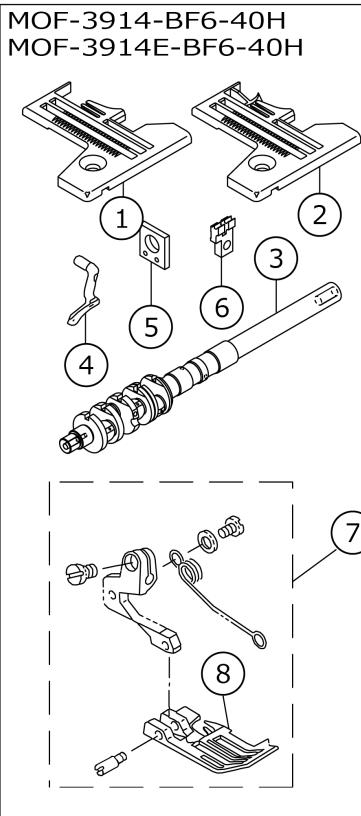
# MOF-3900 SUBCLASSES/MOF-3914

## MOF-3900 SUBCLASSES (1)



No.	品番	品名	備考	子部品	消耗品	個数
1	R4305K0DE00	THROAT PLATE				1.00
2	R4305K0DE0A	THROAT PLATE	P04/Q01 EXCHANGING PARTS			1.00
3	12238200	AUXILIARY FEED DOG	P04/Q01 EXCHANGING PARTS			1.00
4	R4305K0DE00	THROAT PLATE				1.00
5	R4305K0DE0A	THROAT PLATE	P04/Q01 EXCHANGING PARTS			1.00
6	12292108	MAIN SHAFT				1.00
7	12247102	UPPER LOOPER				1.00
8	11893609	GAUGE				1.00
9	12238200	AUXILIARY FEED DOG	P04/Q01 EXCHANGING PARTS			1.00
10	R4305K0EE0A	THROAT PLATE	P05/Q01 EXCHANGING PARTS			1.00
11	12292108	MAIN SHAFT				1.00
12	12247102	UPPER LOOPER				1.00
13	11893609	GAUGE				1.00
14	12238200	AUXILIARY FEED DOG	P05/Q01 EXCHANGING PARTS			1.00

# MOF-3900 SUBCLASSES (2)



No.	品番	品名	備考	子部品	消耗品	個数
1	R4305K0FE00	THROAT PLATE				1.00
2	R4305K0FE0A	THROAT PLATE	P06/Q01 EXCHANGING PARTS			1.00
3	12292108	MAIN SHAFT				1.00
4	12247102	UPPER LOOPER				1.00
5	11893609	GAUGE				1.00
6	12238200	AUXILIARY FEED DOG	P06/Q01 EXCHANGING PARTS			1.00
7	11932654	PRESSER FOOT ASM.				1.00
8	11926508	PRESSER FOOT		*		1.00
9	R4306K0EE00	THROAT PLATE				1.00
10	R4306K0EE0A	THROAT PLATE	P07/Q01 EXCHANGING PARTS			1.00
11	12149209	NEEDLE CLAMP, 2-NEEDLE				1.00
12	12292108	MAIN SHAFT				1.00
13	12247102	UPPER LOOPER				1.00
14	11893609	GAUGE				1.00
15	12238200	AUXILIARY FEED DOG	P07/Q01 EXCHANGING PARTS			1.00
16	11942653	PRESSER FOOT ASM.				1.00
17	11942604	PRESSER FOOT		*		1.00
18	R4306K0FE00	THROAT PLATE				1.00
19	R4306K0FE0A	THROAT PLATE	P08/Q01 EXCHANGING PARTS			1.00
20	12149209	NEEDLE CLAMP, 2-NEEDLE				1.00
21	12292108	MAIN SHAFT				1.00
22	12247102	UPPER LOOPER				1.00
23	11893609	GAUGE				1.00
24	12238200	AUXILIARY FEED DOG	P08/Q01 EXCHANGING PARTS			1.00
25	11942653	PRESSER FOOT ASM.				1.00
26	11942604	PRESSER FOOT		*		1.00

# HOW TO MAKE USE OF THIS PARTS LIST

1.As to "#01" and "#02" refer to the "Note" given at the bottom of the respective pages.

2.Codes on the "Qty" column

- Each numeral indicates the number of parts required.
- "0.1" and "2.5" indicate the length (in meters) of the respective parts.

3.Parentheses mean that the corresponding part is a subpart that constructs an assembly part.

4.Dotted lines on the Figures indicate assembly parts.

1. リストページの# 0 1、# 0 2の印は、ページ下の"注記"の説明を参照下さい。
2. 数量欄の数字は、個数を表し、0. 1、2. 5等の数値は、長さ（単位メートル）を表します。
3. 数量欄の（ ）は、組部品を構成している子部品であることを意味します。
4. イラストページの-----枠は、組構成であることを意味します。